

## Tween Bridge Solar Farm

### Environmental Statement

### Figure 2.2b: Indicative Operational Layout Plan (Fixed and Tracker Solar Panel)

Planning Act 2008

Infrastructure Planning (Applications: Prescribed Forms  
and Procedure) Regulations 2009

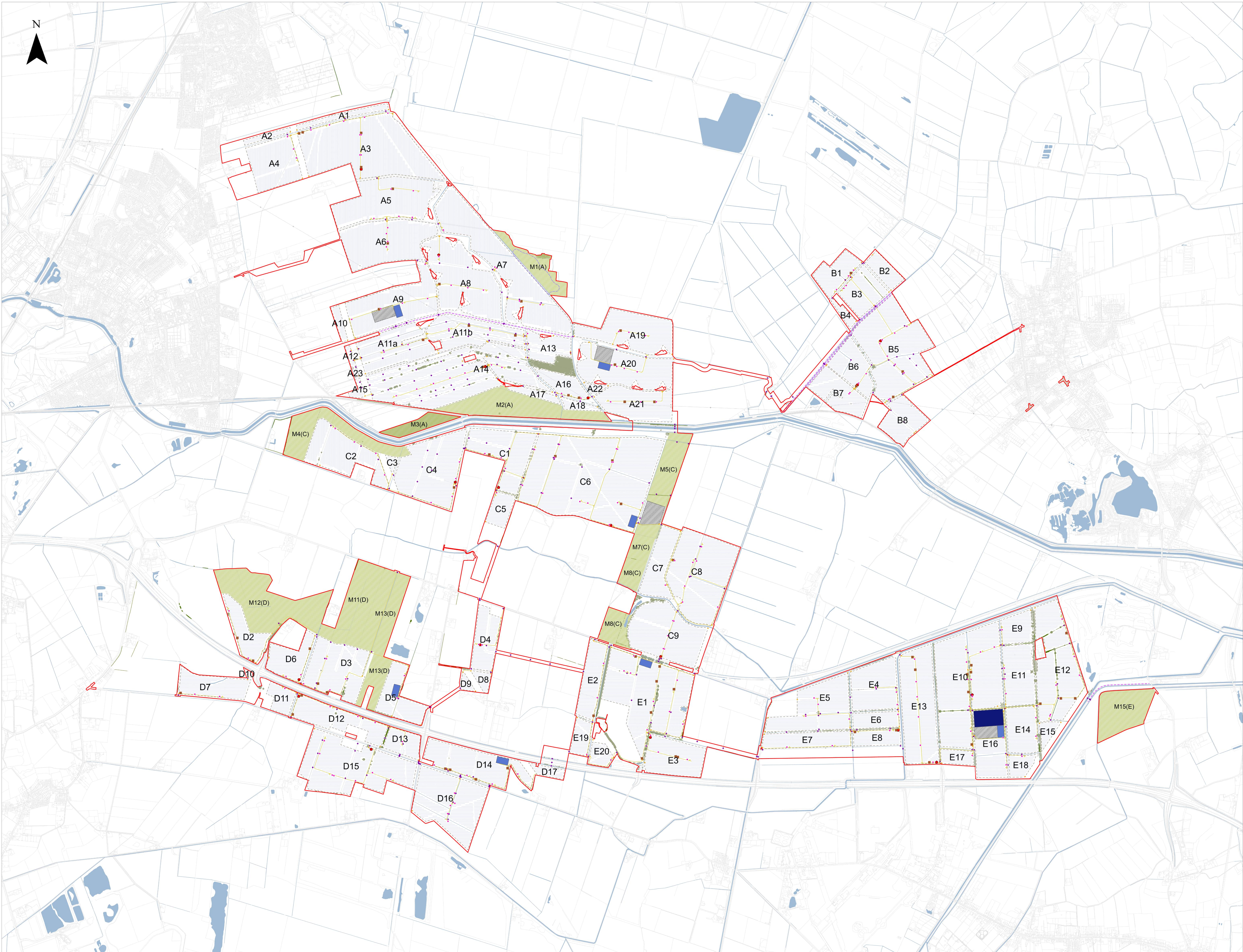
APFP Regulation 5(2)(a)

Document Reference: 6.4.2.2

August 2025

Revision 1

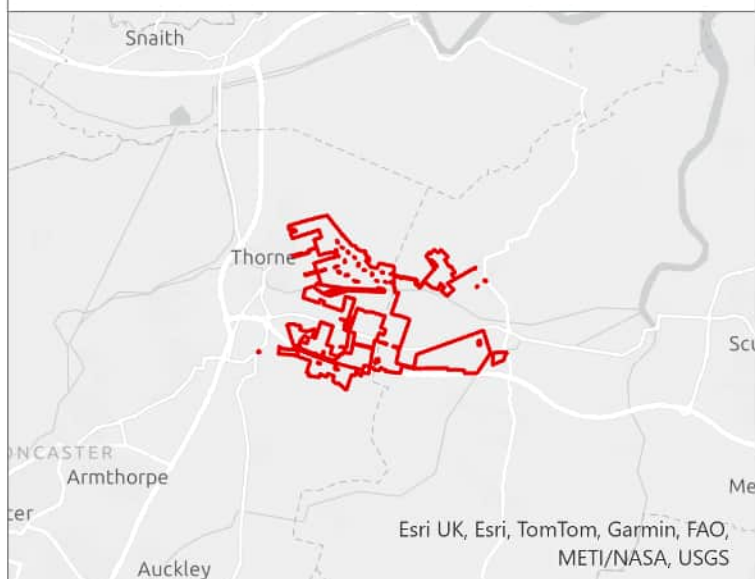




- LEGEND**
- Order Limits
  - Existing Features
    - Public Rights of Way
    - Powerlines and Pylons
    - Woodland
    - Trees
    - Hedgerows
    - Waterbodies and Watercourses
  - Scheme
    - Access Points
    - Crossing Points
    - Inverters
    - Switchgears
    - Spares Containers
    - Internal Access Tracks
    - 400kV Substation
    - 132kV Substation
    - BESS
    - Permissive Path
    - Fencing
    - Indicative Areas for Mitigation, Enhancement and/or Retained Agricultural Land
    - Solar PV Modules
    - A1 Field Reference

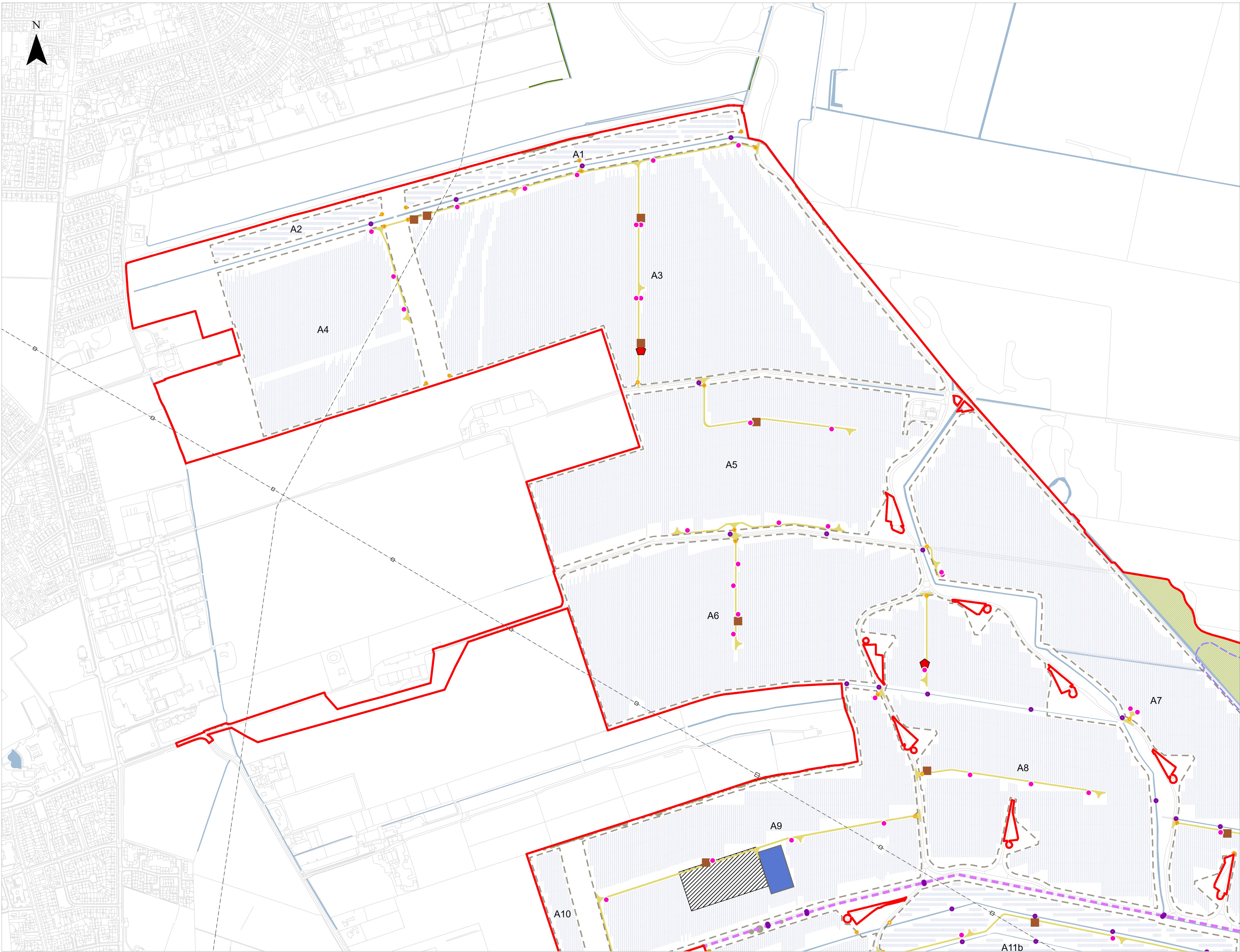
Notes

1. The drawing is for illustrative purposes only.
2. The location of the features shown are indicative only to show the key features of Tween Bridge Solar Farm for which development is sought.
3. The indicative layout demonstrates one way that the Scheme could be undertaken within the parameters of the DCO, consent is not being sought for this layout.



## Tween Bridge Solar Farm

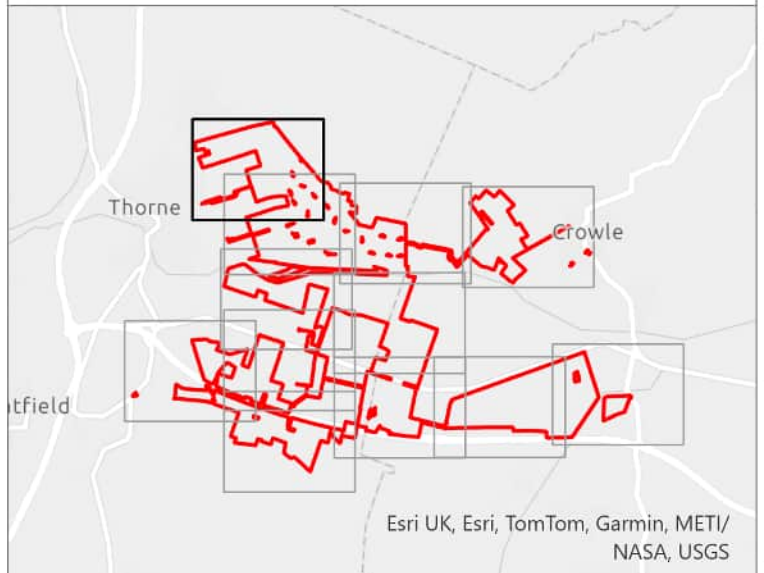




- LEGEND**
- Order Limits
  - Existing Features
  - Public Rights of Way
  - Powerlines and Pylons
  - Woodland
  - Trees
  - Hedgerows
  - Waterbodies and Watercourses
  - Scheme
  - Access Points
  - Crossing Points
  - Inverters
  - Switchgears
  - Spares Containers
  - Internal Access Tracks
  - 400kV Substation
  - 132kV Substation
  - BESS
  - Permissive Path
  - Fencing
  - Indicative Areas for Mitigation, Enhancement and/or Retained Agricultural Land
  - Solar PV Modules
  - Field Reference

Notes

1. The drawing is for illustrative purposes only.
2. The location of the features shown are indicative only to show the key features of Tween Bridge Solar Farm for which development is sought.
3. The indicative layout demonstrates one way that the Scheme could be undertaken within the parameters of the DCO, consent is not being sought for this layout.



### Tween Bridge Solar Farm

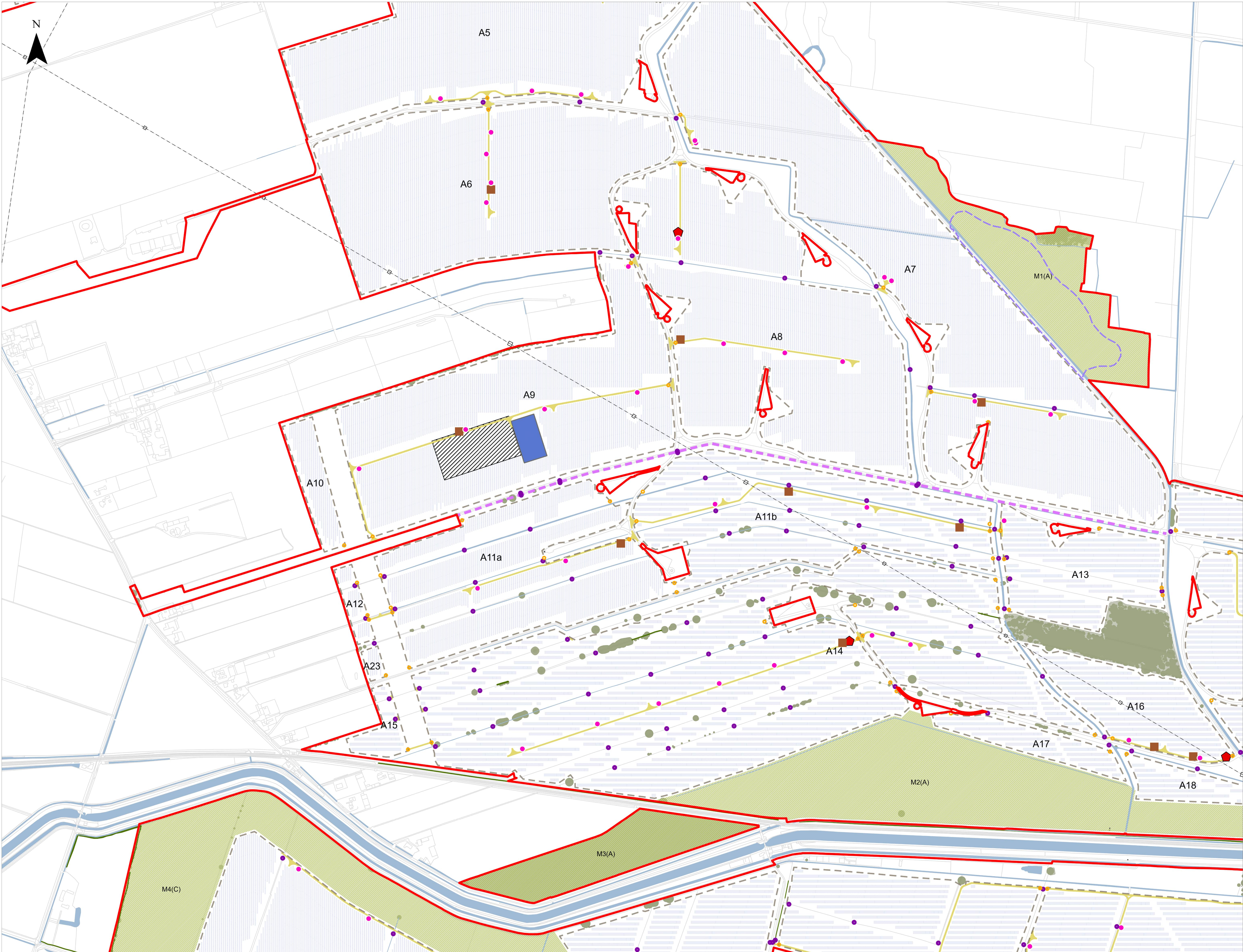
Drawing Ref: Environmental Statement Volume 4, Figure 2.2b: Indicative Operational Layout Plan

Coordinate System: British National Grid  
Projection: Transverse Mercator  
Datum: OSGB 1936  
Scale: 1:3,000  
Paper Size: A0  
Sheet: 1 of 12

**RWE**

Document Reference: 6.4.2.2  
Revision: 1  
PINS Number: EN010148  
Drawing Status: DCO Application  
Drawn: NAM  
Checked: EH  
Approved: AD  
Date: 20/08/2025

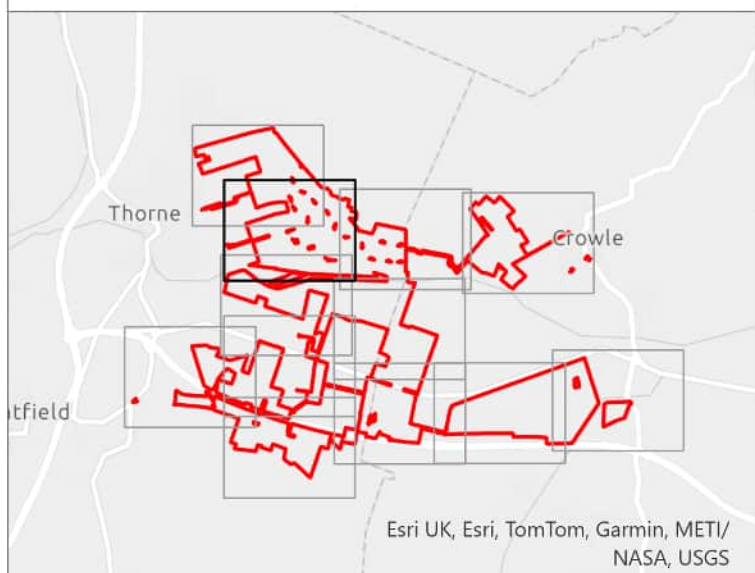




- LEGEND**
- Order Limits
  - Existing Features
  - Public Rights of Way
  - Powerlines and Pylons
  - Woodland
  - Trees
  - Hedgerows
  - Waterbodies and Watercourses
  - Scheme
  - Access Points
  - Crossing Points
  - Inverters
  - Switchgears
  - Spares Containers
  - Internal Access Tracks
  - 400kV Substation
  - 132kV Substation
  - BESS
  - Permissive Path
  - Fencing
  - Indicative Areas for Mitigation, Enhancement and/or Retained Agricultural Land
  - Solar PV Modules
  - A1 Field Reference

Notes

- The drawing is for illustrative purposes only.
- The location of the features shown are indicative only to show the key features of Tween Bridge Solar Farm for which development is sought.
- The indicative layout demonstrates one way that the Scheme could be undertaken within the parameters of the DCO, consent is not being sought for this layout.

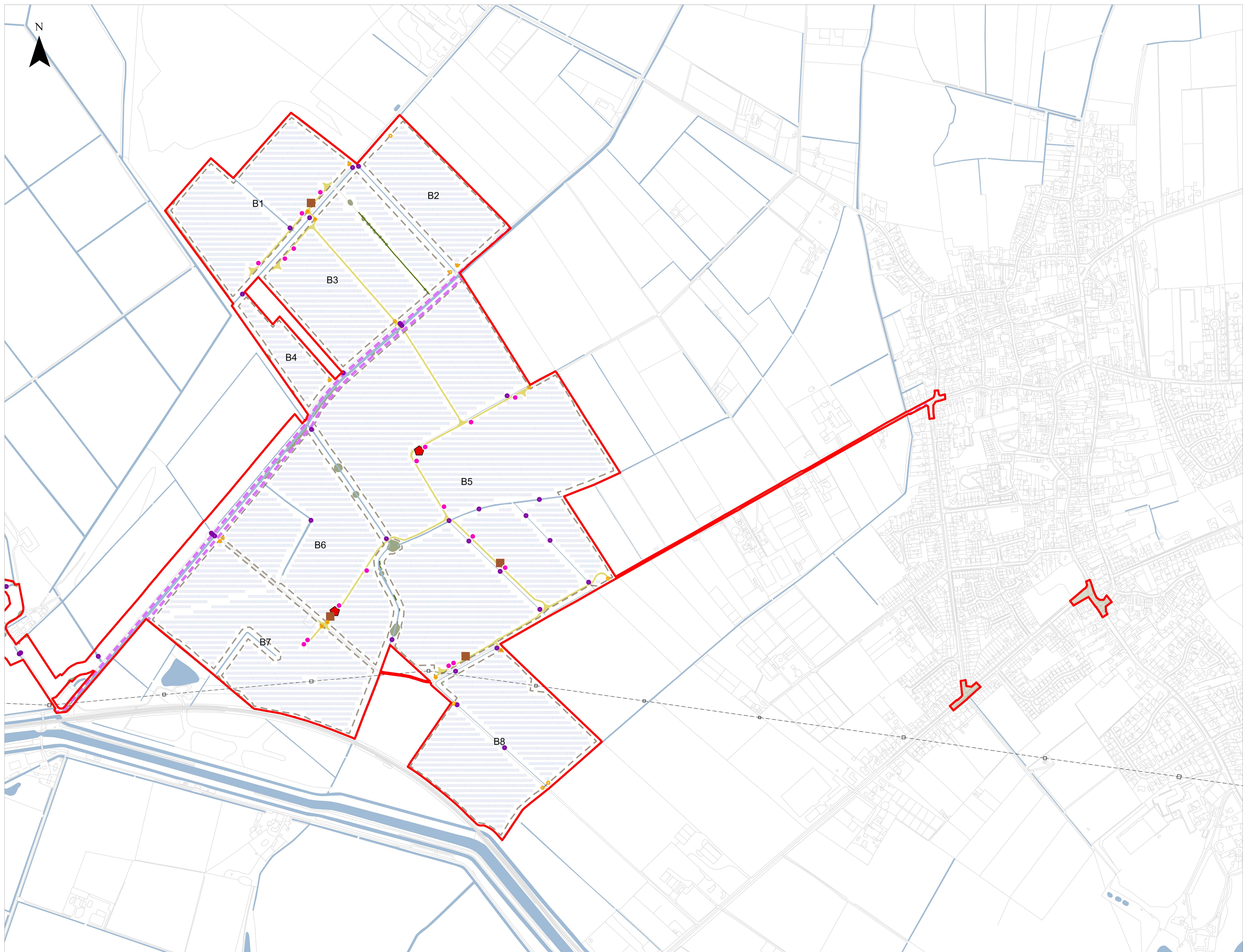


## Tween Bridge Solar Farm













**LEGEND**


 Order Limits


**Existing Features**


 Public Rights of Way

 Powerlines and Pylons


 Woodland


 Trees


 Hedgerows


 Waterbodies and Watercourses


**Scheme**


 Access Points


 Crossing Points


 Inverters


 Switchgears


 Spares Containers


 Internal Access Tracks


 400kV Substation


 132kV Substation


 BESS

 Permissive Path

 Fencing


 Indicative Areas for Mitigation, Enhancement and/or Retained Agricultural Land

 Solar PV Modules

 Field Reference

Notes

1. The drawing is for illustrative purposes only
2. The location of the features shown are indicative only to show the key features of Tween Bridge Solar Farm for which development is sought
3. The indicative layout demonstrates one way that the Scheme could be undertaken within the parameters of the DCO, consent is not being sought for this layout.



The map shows the proposed layout of the Tween Bridge Solar Farm. It includes a legend with symbols for Order Limits, Existing Features (Public Rights of Way, Powerlines and Pylons, Woodland, Trees, Hedgerows, Waterbodies and Watercourses), Scheme features (Access Points, Crossing Points, Inverters, Switchgears, Spares Containers, Internal Access Tracks, 400kV Substation, 132kV Substation, BESS, Permissive Path, Fencing, Indicative Areas for Mitigation, Enhancement and/or Retained Agricultural Land, Solar PV Modules, and Field Reference). The map itself shows a red outline of the farm boundary, with various features and field references marked. A scale bar indicates distances up to 100 meters. The map is titled 'Tween Bridge Solar Farm' and includes a north arrow and a scale of 1:3,000.

Coordinate System: British National Grid  
Projection: Transverse Mercator  
Datum: OSGB 1936

© Crown copyright and database right 2025  
Ordnance Survey AC00000808122

Scale: 1:3,000      Paper Size: A0      Sheet: 4 of 12

**RWE**

Document Reference: 6.4.2.2      Revision: 1

PINS Number: EN010148      Drawing Status: DCO Application

Drawn: NAM      Checked: EH      Approved: AD      Date: 20/08/2025

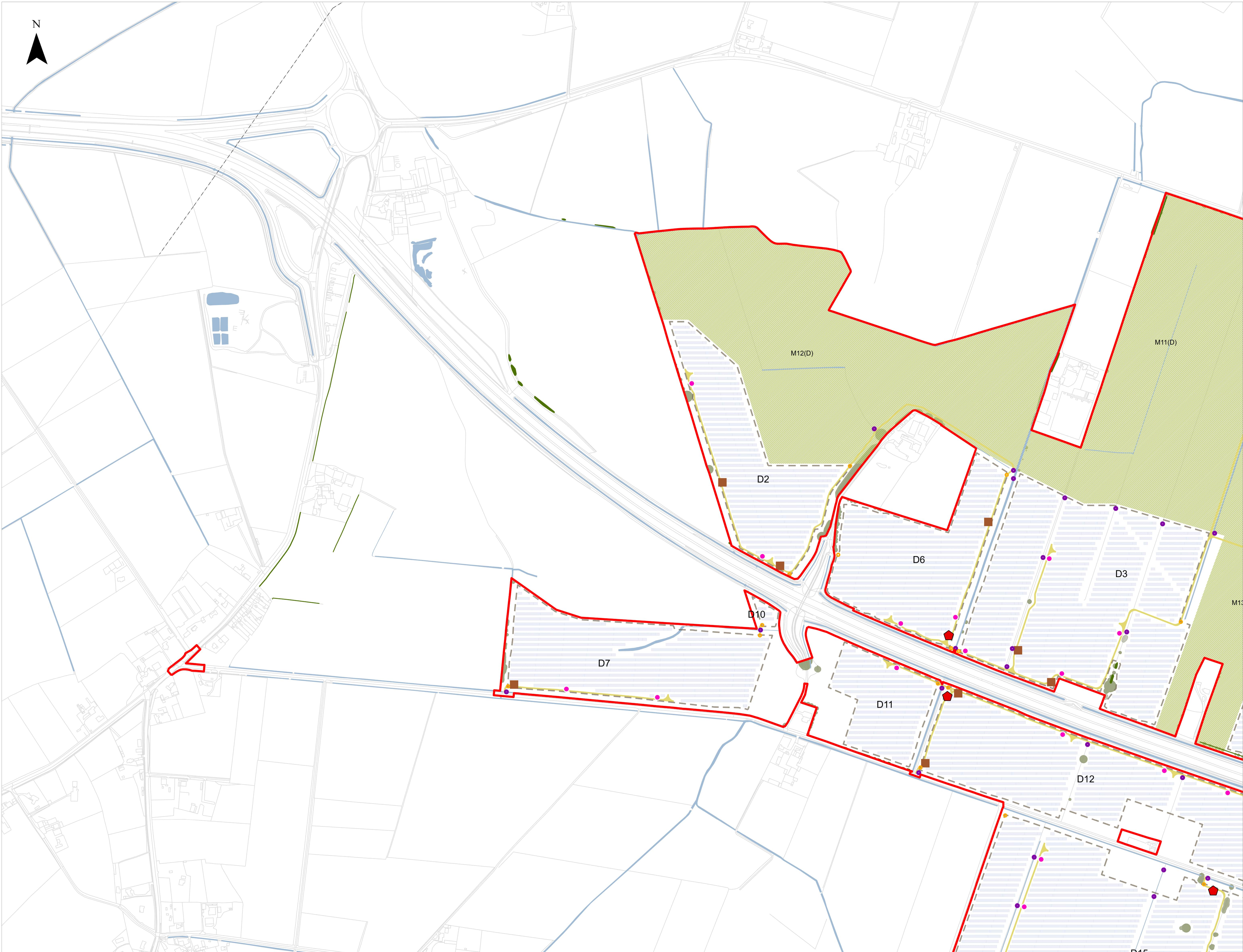








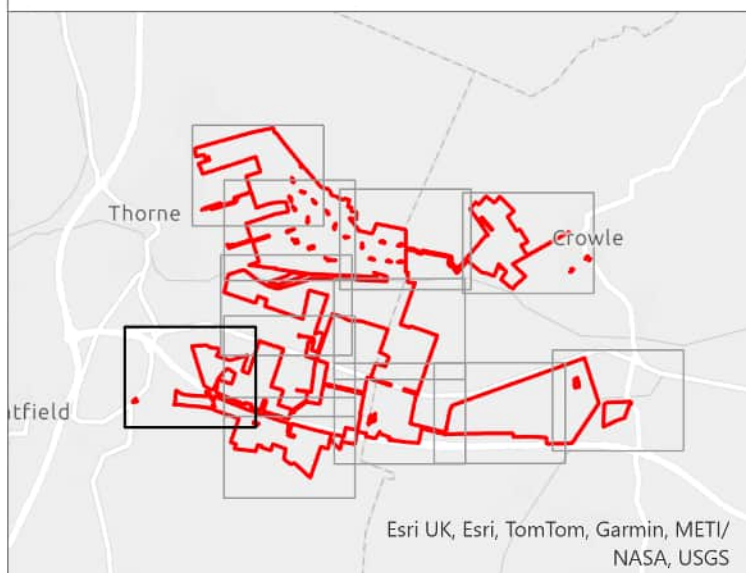




- LEGEND**
- Order Limits
  - Existing Features
  - Public Rights of Way
  - Powerlines and Pylons
  - Woodland
  - Trees
  - Hedgerows
  - Waterbodies and Watercourses
  - Scheme
  - Access Points
  - Crossing Points
  - Inverters
  - Switchgears
  - Spares Containers
  - Internal Access Tracks
  - 400kV Substation
  - 132kV Substation
  - BESS
  - Permissive Path
  - Fencing
  - Indicative Areas for Mitigation, Enhancement and/or Retained Agricultural Land
  - Solar PV Modules
  - Field Reference

Notes

1. The drawing is for illustrative purposes only.
2. The location of the features shown are indicative only to show the key features of Tween Bridge Solar Farm for which development is sought.
3. The indicative layout demonstrates one way that the Scheme could be undertaken within the parameters of the DCO, consent is not being sought for this layout.



## Tween Bridge Solar Farm

Drawing Ref: Environmental Statement Volume 4,  
Figure 2.2b: Indicative Operational Layout Plan

Coordinate System: British National Grid  
Projection: Transverse Mercator  
Datum: OSGB 1936  
Scale: 1:3,000

© Crown copyright and  
statutory rights 2025  
Ordnance Survey AC2000080122  
Paper Size: A0  
Sheet: 7 of 12

**RWE**

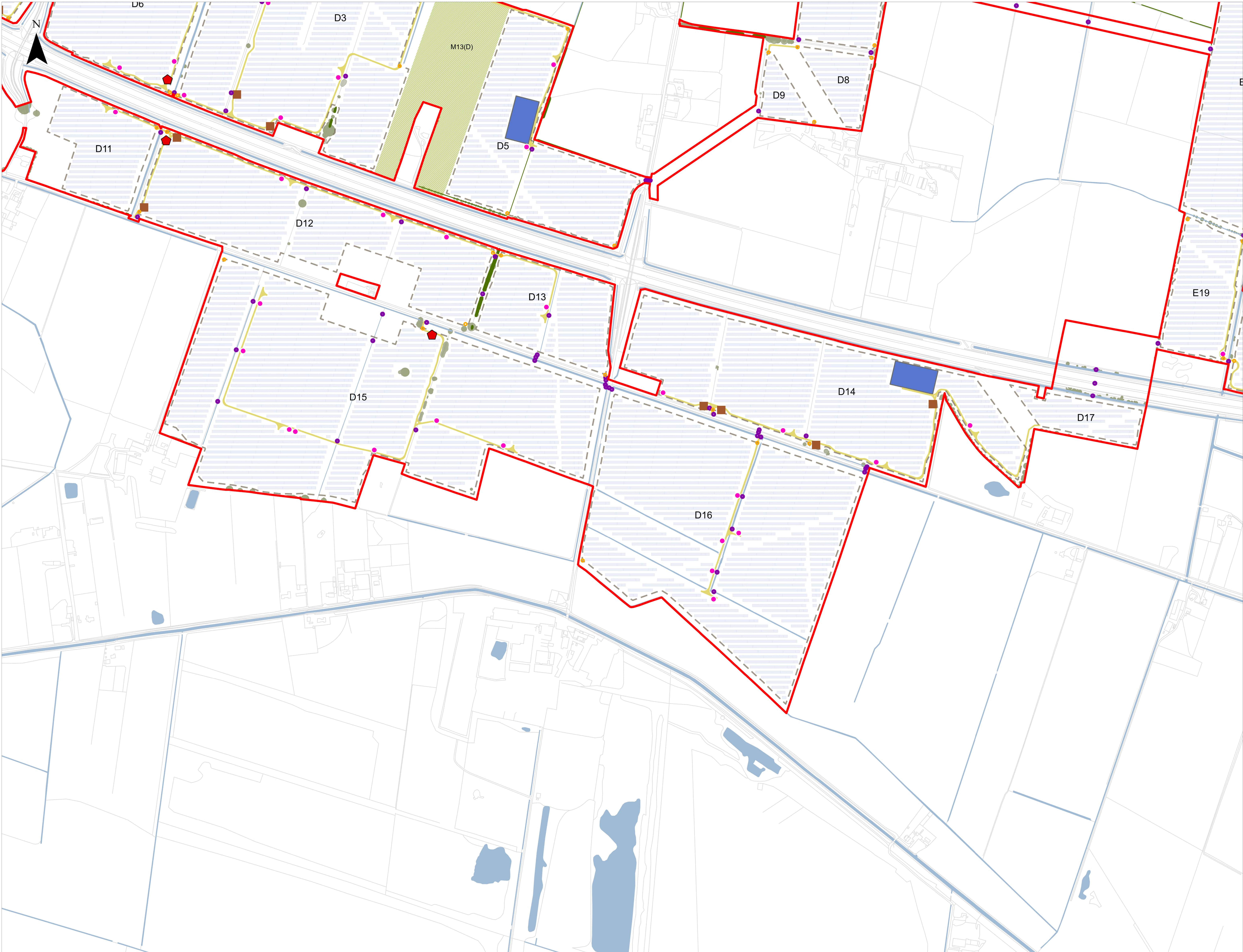
Document Reference: 6.4.2.2  
Revision: 1  
PINS Number: EN010148  
Drawing Status: DCO Application  
Drawn: NAM  
Checked: EH  
Approved: AD  
Date: 20/08/2025

Path: C:\Users\11424\OneDrive\UK\_Solids\Project\TweenBridge\JMS\_Solar\_Project\TweenBridge\_Operative\_Plan\JMS\_Solar\_Template.aprx









**LEGEND**

**Order Limits**

**Existing Features**

- Public Rights of Way
- Powerlines and Pylons
- Woodland
- Trees
- Hedgerows
- Waterbodies and Watercourses

**Scheme**

- Access Points
- Crossing Points
- Inverters
- Switchgears
- Spares Containers
- Internal Access Tracks
- 400kV Substation
- 132kV Substation
- BESS
- Permissive Path
- Fencing
- Indicative Areas for Mitigation, Enhancement and/or Retained Agricultural Land
- Solar PV Modules
- A1 Field Reference

**Notes**

- The drawing is for illustrative purposes only.
- The location of the features shown are indicative only to show the key features of Tween Bridge Solar Farm for which development is sought.
- The indicative layout demonstrates one way that the Scheme could be undertaken within the parameters of the DCO, consent is not being sought for this layout.

**Tween Bridge Solar Farm**

Drawing Ref: Environmental Statement Volume 4, Figure 2.2b: Indicative Operational Layout Plan

Coordinate System: British National Grid  
Projection: Transverse Mercator  
Datum: OSGB 1936

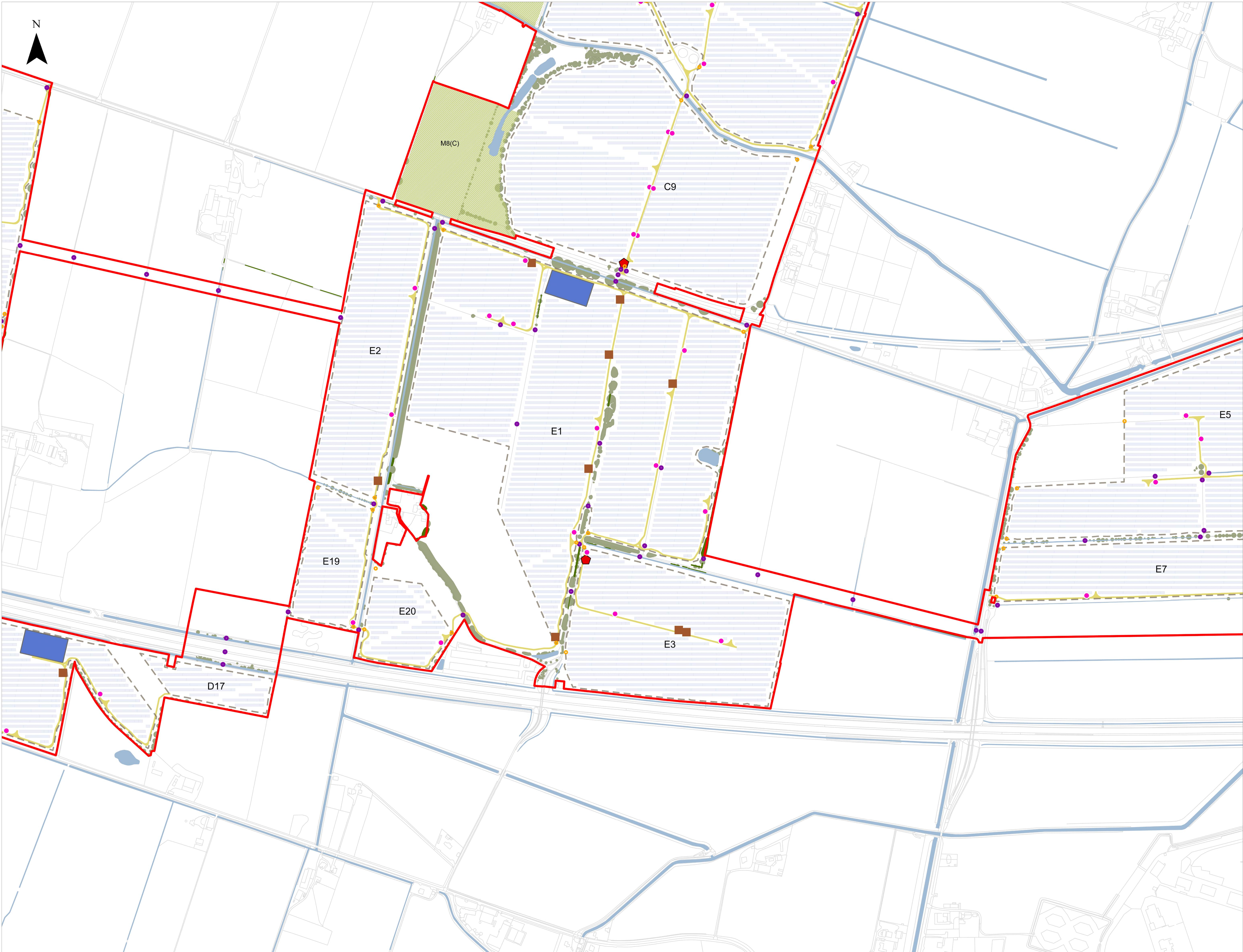
© Crown copyright and database right 2025  
Ordnance Survey AC2000080122

Scale: 1:3,000 Paper Size: A0 Sheet: 9 of 12

**RWE**

Document Reference: 6.4.2.2 Revision: 1  
PINS Number: EN010148 Drawing Status: DCO Application  
Drawn: NAM Checked: EH Approved: AD Date: 20/08/2025

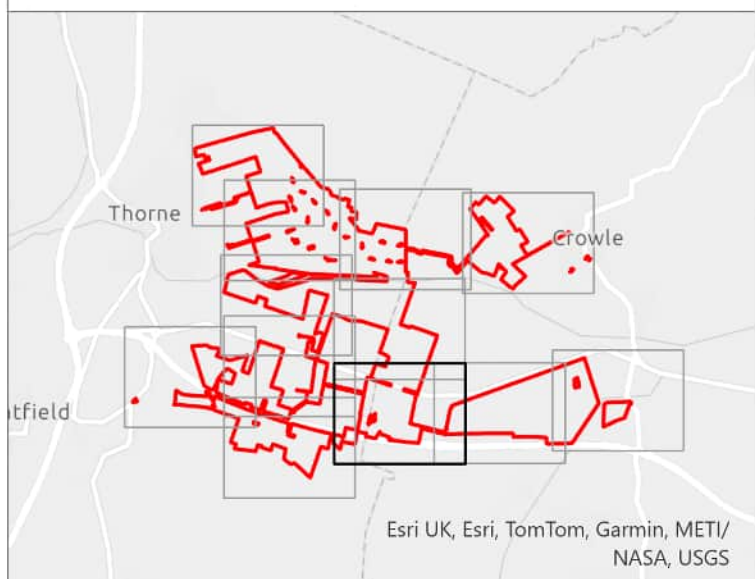




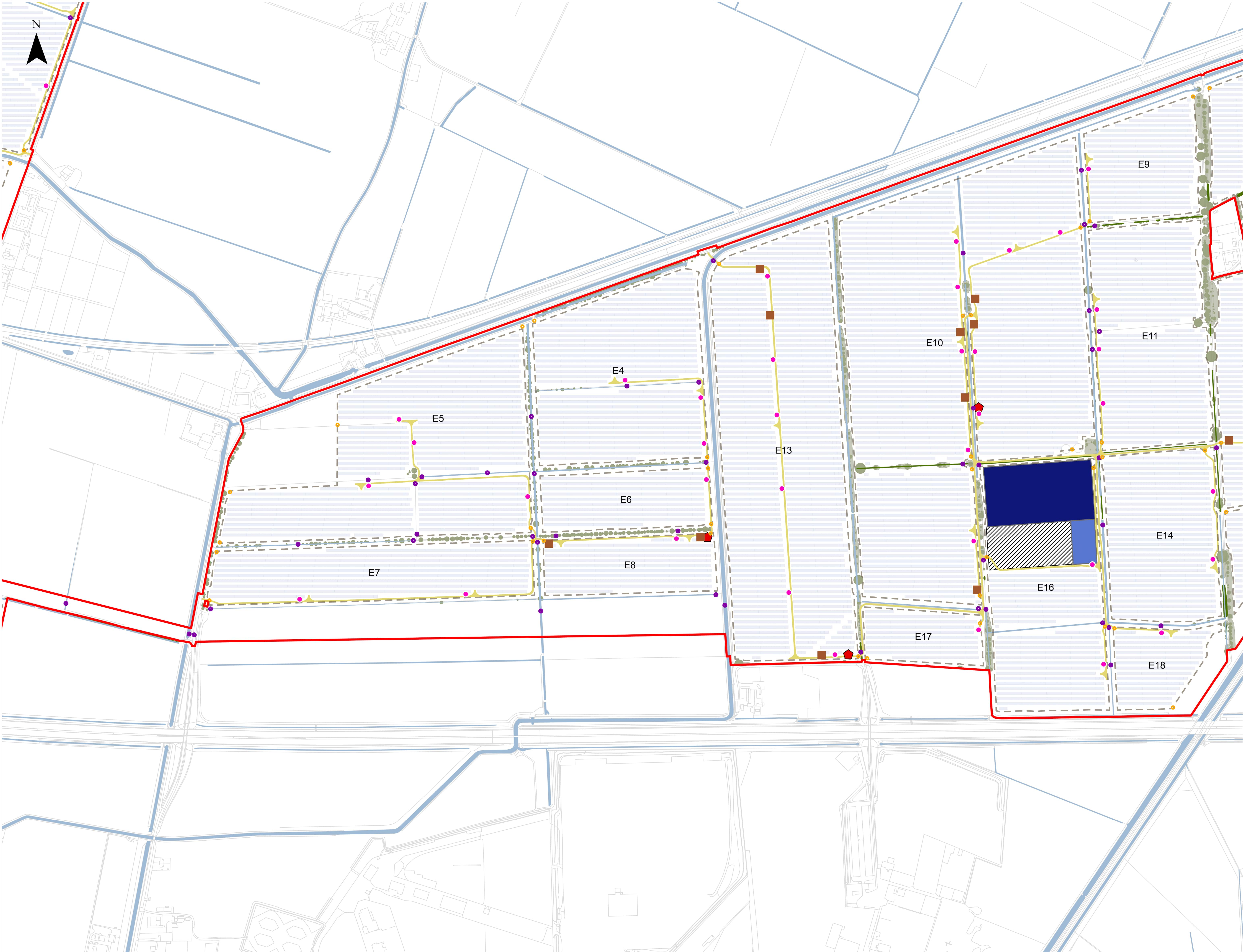
- LEGEND**
- Order Limits
  - Existing Features
    - Public Rights of Way
    - Powerlines and Pylons
    - Woodland
    - Trees
    - Hedgerows
    - Waterbodies and Watercourses
  - Scheme
    - Access Points
    - Crossing Points
    - Inverters
    - Switchgears
    - Spares Containers
    - Internal Access Tracks
    - 400kV Substation
    - 132kV Substation
    - BESS
    - Permissive Path
    - Fencing
    - Indicative Areas for Mitigation, Enhancement and/or Retained Agricultural Land
    - Solar PV Modules
    - Field Reference

Notes

1. The drawing is for illustrative purposes only
2. The location of the features shown are indicative only to show the key features of Tween Bridge Solar Farm for which development is sought
3. The indicative layout demonstrates one way that the Scheme could be undertaken within the parameters of the DCO, consent is not being sought for this layout



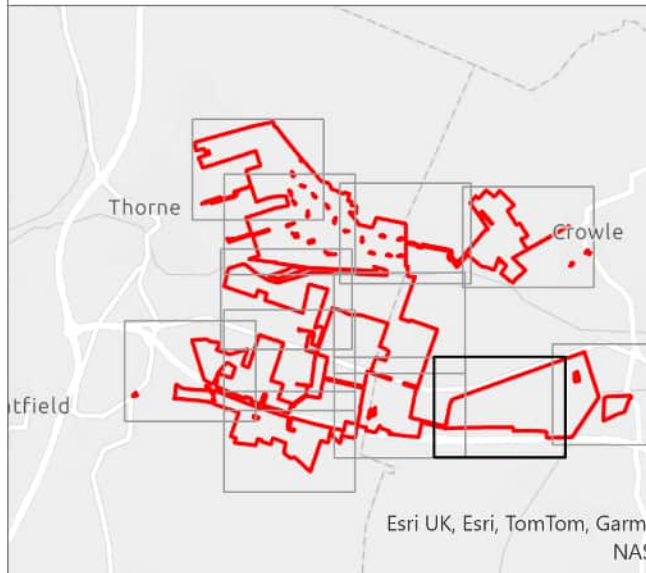




- LEGEND**
- Order Limits
  - Existing Features
    - Public Rights of Way
    - Powerlines and Pylons
    - Woodland
    - Trees
    - Hedgerows
    - Waterbodies and Watercourses
  - Scheme
    - Access Points
    - Crossing Points
    - Inverters
    - Switchgears
    - Spares Containers
    - Internal Access Tracks
    - 400kV Substation
    - 132kV Substation
    - BESS
    - Permissive Path
    - Fencing
    - Indicative Areas for Mitigation, Enhancement and/or Retained Agricultural Land
    - Solar PV Modules
    - Field Reference

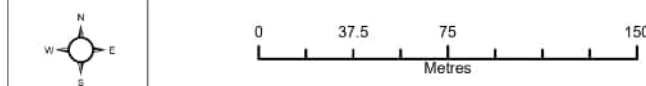
Notes

1. The drawing is for illustrative purposes only
2. The location of the features shown are indicative only to show the key features of Tween Bridge Solar Farm for which development is sought
3. The indicative layout demonstrates one way that the Scheme could be undertaken within the parameters of the DCO, consent is not being sought for this layout



**Tween Bridge Solar Farm**

Drawing Ref: Environmental Statement Volume 4,  
Figure 2.2b: Indicative Operational Layout Plan



Coordinate System: British National Grid  
Projection: Transverse Mercator  
Datum: OSGB 1936

© Crown copyright and  
Statutory rights 2025  
Ordnance Survey AC0000808122

Scale: 1:3,000 Paper Size: A0 Sheet: 11 of 12

**RWE**

Document Reference: 6.4.2.2 Revision: 1

PINS Number: EN010148 Drawing Status: DCO Application

Drawn: NAM Checked: EH Approved: AD Date: 20/08/2025

Path: C:\Users\11424\OneDrive\UK\_Solar\_Projects\TweenBridge\AS3 TweenBridge - Overview Farm\AS3 TweenBridge - Overview Farm - New Template.dwg



